



## Mouse Monoclonal Antibody to Trim5a

**Cat. No.** SGA20023 **Package Size:** 50ul , 100ul

### Product Attribute

<b>Aliases</b>	RNF88; TRIM5alpha
<b>Host/Isotype</b>	Mouse IgG1
<b>Species Reactivity</b>	Human
<b>Formulation</b>	Ascitic fluid containing 0.03% sodium azide.
<b>Storage</b>	Store at 4°C short term. Aliquot and store at -20°C long term. Avoid freeze/thaw cycles.
<b>Purification</b>	Purified
<b>Immunogen</b>	Purified recombinant fragment of human trim5 alpha expressed in E. Coli.
<b>Noted</b>	For research use only

### Applications

### Recommended dilution

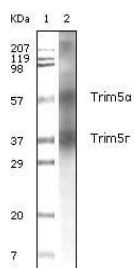
ELISA	1/10000
WB	1/500 - 1/2000
ICC	
IHC	1/200 - 1/1000

### Description

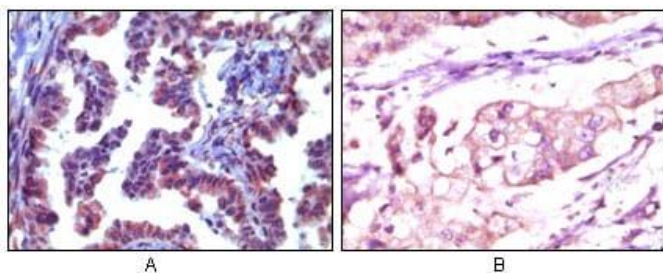
TRIM5-alpha is a protein that is found in the cells of many mammals and fends of various retrovirus infections. It protects monkeys from infection with HIV-1, and humans from infection with some other viruses. If a retrovirus has entered a cell, it needs to shed its capsid in order to reversely transcribe its genes, so that they can be expressed by the host cell. It is believed that TRIM5 alpha, which is present in the cytoplasm, somehow recognizes the capsid and blocks its shedding, thereby stopping the virus in its tracks. It thus represents an intracellular defense completely separate from the rest of the body's immune system.



**Application:**



Western blot analysis using Trim5a mouse mAb against human breast carcinoma tissue lysate.



Immunohistochemical analysis of paraffin-embedded human metastatic adenocarcinoma(A) and stomach adenocarcinoma (B), showing cytoplasmic localization using Trim5a mouse mAb with AEC staining (A) and DAB staining(B).

If you have technical questions about our products, please email us at [tech@sinogeneclon.com](mailto:tech@sinogeneclon.com) to have all of your questions answered.