



Mouse Monoclonal Antibody to CD10

Cat. No. SGA20022 **Package Size:** 50ul , 100ul

Product Attribute

Aliases	CD10
Host/Isotype	Mouse IgG2b
Species Reactivity	Human
Formulation	Ascitic fluid containing 0.03% sodium azide.
Storage	Store at 4°C short term. Aliquot and store at -20°C long term. Avoid freeze/thaw cycles.
Purification	Purified
Immunogen	Purified recombinant fragment of human CD-10 expressed in E. Coli.
Noted	For research use only

Applications

Recommended dilution

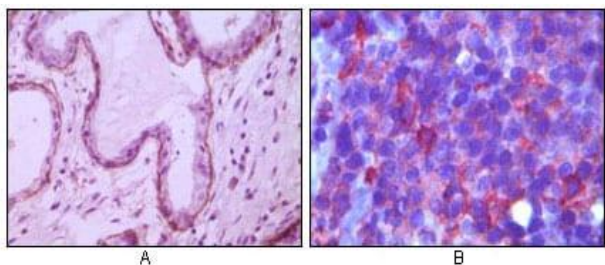
ELISA	1/10000
WB	
ICC	
IHC	1/200 - 1/1000

Description

CD10 is a 100kDa glycoprotein, also designated Common Acute Lymphocytic Leukemia Antigen (CALLA). It is a cell surface enzyme with neutral metalloendopeptidase activity which inactivates a variety of biologically active peptides. CD10 is expressed on the cells of lymphoblastic, Burkitt



Application:



Immunohistochemical analysis of paraffin-embedded human breast ductal myoepithelium (A) and lymph tissue (B), showing cytoplasmic (A) and membrane (B) localization using CD10 mouse mAb with DAB staining (A) and AEC staining (B).

If you have technical questions about our products, please email us at tech@sinogeneclon.com to have all of your questions answered.